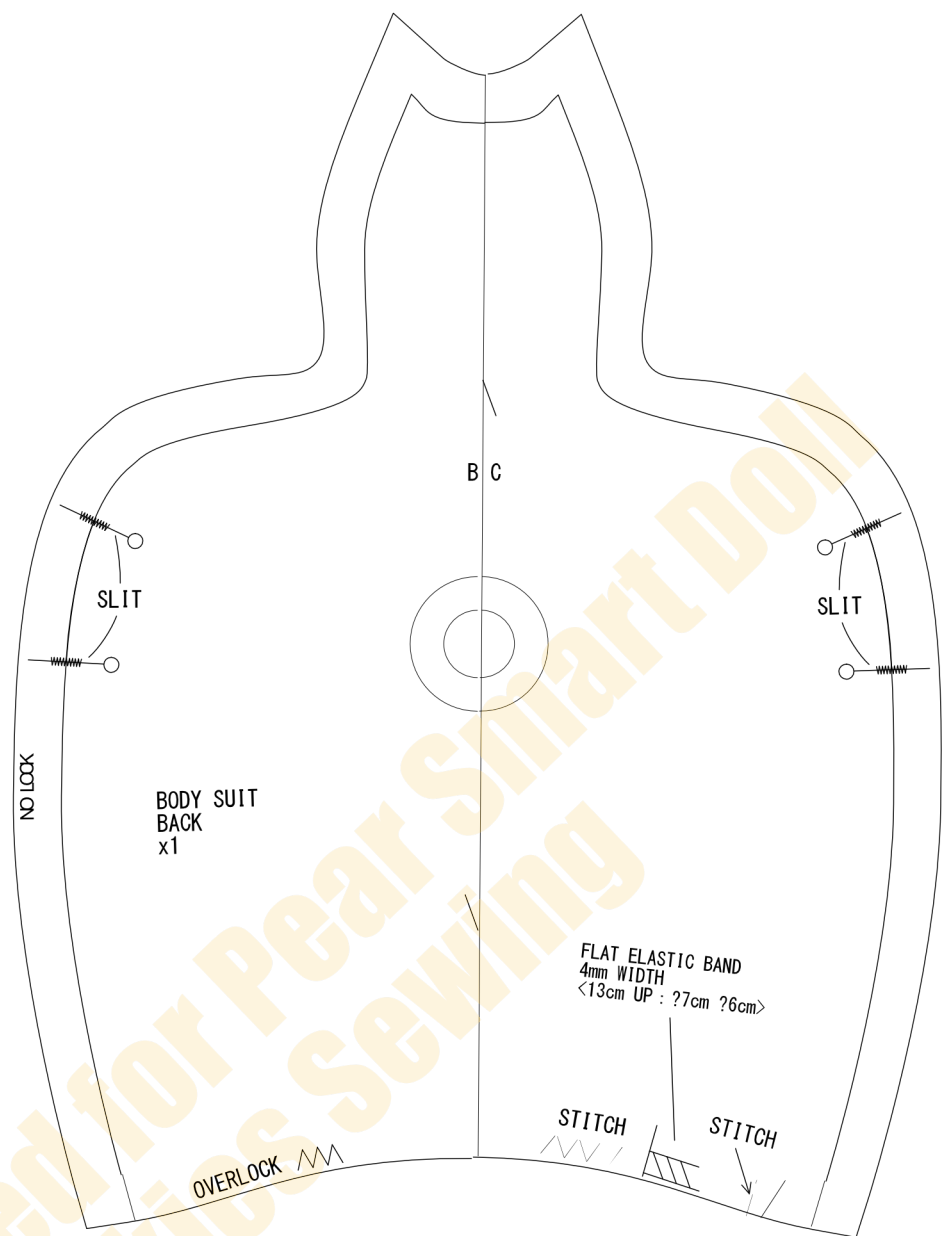
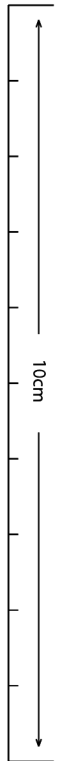


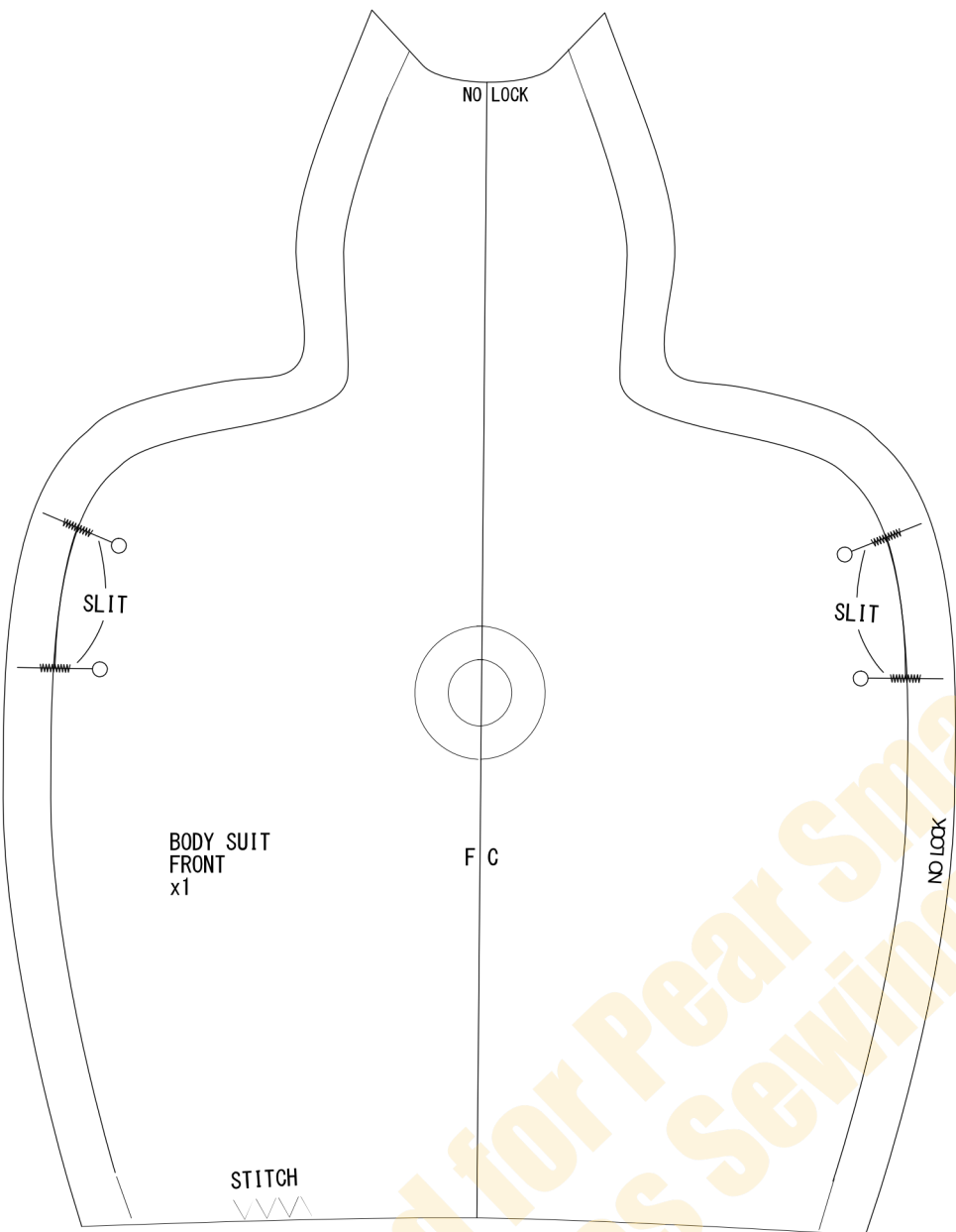
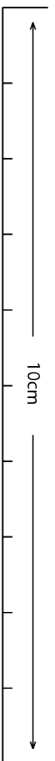
SMART DOLL



BODY SUIT

SMART DOLL

DESIGNED BY DANNY CHOO



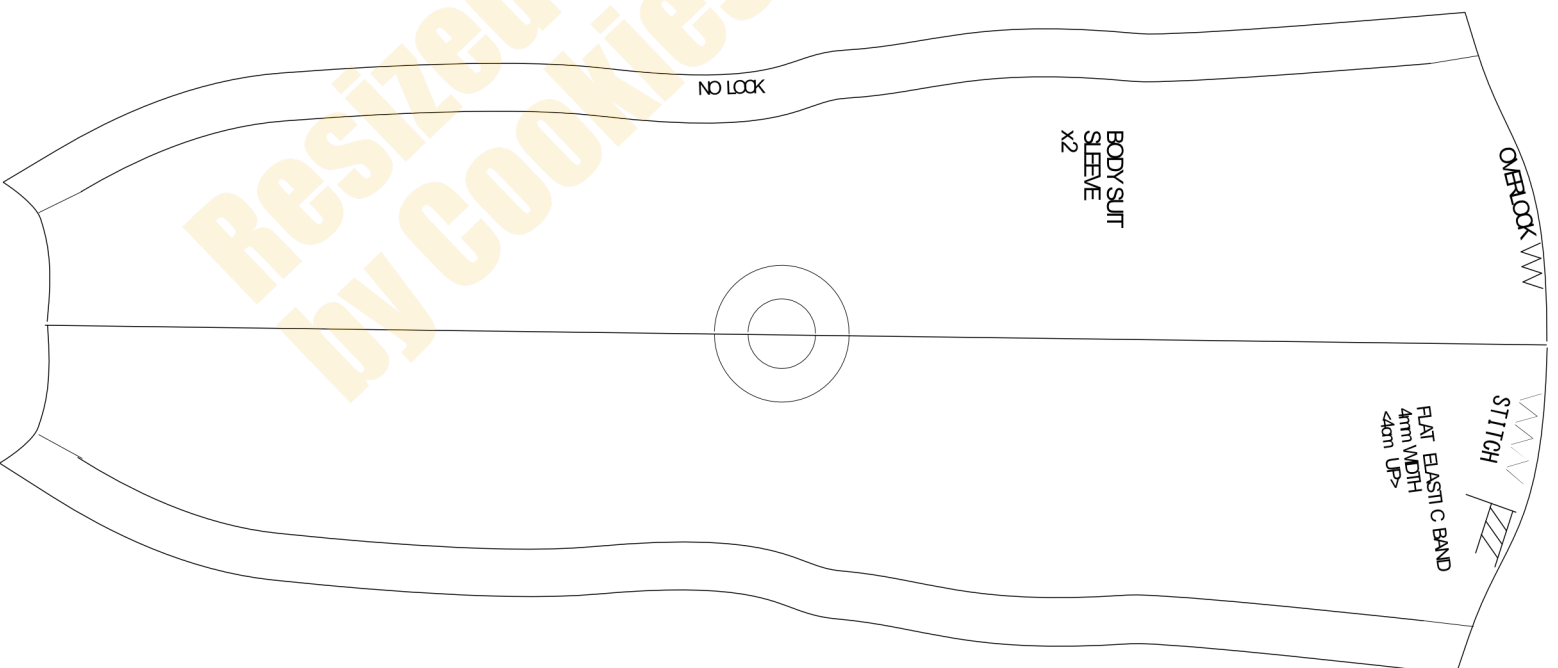
BODY SUIT
FRONT
x1

F C

SLIT

NO LOCK

STITCH



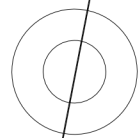
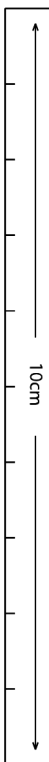
BODY SUIT
SLEEVE
x2

NO LOCK

OVERLOCK

STITCH

FLAT ELASTIC BAND
4mm WIDTH
24cm UP



F C

OVERLOCK

STITCH

STITCH

SIDE
FLAT ELASTIC BAND
4mm WIDTH
<12.5cm UP>

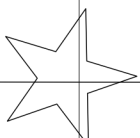
B C

SLIT

BODY SUIT
SPATS
x2

No Lock

joint



BODY SUIT

SMART DOLL

DESIGNED BY DANNY CHOO

